



IMPACT REPORT

COMMUNITY HEALTH CARE:
51 years of putting the patient first.

MESSAGE FROM THE PRESIDENT & CHAIR

2020 IN REVIEW

BOARD OF DIRECTORS

Linda Bowman
Ladedria Griffin-Stallworth (Treasurer)
Paul Hansen
Ria Johnson
Mei Yun Loya
Katie Parker
Alma Price
Ken Repp
Dan Sloan (Secretary)
William Speaker
Doug Swanberg*
Annie Tustison
Marco Viniegra (Chair)
Gary Walmer (Vice-Chair)
Barbara Washington
Scarlett Watts

COMMITTEE MEMBERS

Jack Cvitanovic
Donnell Harvey
Tim Rhee
James Satt
Taylor Hodges
Barbara Washington
Scarlett Watts
Janet Cheryl Williams

LEGACY ADVISORY BOARD

Susan Brinkman, CTFA
Tonia Campbell, CPA
David Flentge; President and CEO
Thomas Hong, JD, LLM
Rick Oldenburg, CAP - Chair
Colby Parks, JD
Tom Ryan, CEPA
Bernstein Private Wealth Management
Russ Sondker, CFRE (Staff)
Barbara Hesner (Staff)
Cathy Hall (Staff)

VOLUNTEER PROVIDERS

Gregory Brown, MD
Robert Ettlinger, MD
William Priebe, MD
Sidney Whaley, MD

*Deceased

Community Health Care experienced both challenges and successes in 2020. Our greatest success was the staff. Faced with an unparalleled situation in the pandemic they rose to the occasion, developing new ways to care for our patients and continuing to provide the highest quality health care with compassionate service for all. We are profoundly humbled and deeply appreciative of the dedication they showed to those we serve.

At the start of the pandemic Community Health Care followed the guidance of the CDC and Tacoma Pierce County Health Department (TPCHD) to assist in treating this virus. As a result, two clinics were changed to COVID only for patients and community members and three clinics were non-COVID only. The Hilltop Clinic continued serving both types of patients with COVID only patients being seen in the Urgent Care Clinic. Dental care was limited to emergency care only and new patients were only seen for urgent medical needs. Everyone visiting clinics was screened, visitors were limited, and clinical hours were reduced due to a reduction in patient demand. Drive thru testing was started at the two COVID only clinics.

Like all organizations, we struggled to get PPE, testing supplies, hand sanitizer, and cleaning supplies. Fortunately, local distilleries started making hand sanitizer and which enabled us to secure needed supplies through current and new vendors. Due to the demand and limits for these supplies' prices increased greatly. To keep staff safe, social distancing protocols were started and all employees were required to wear masks in the clinics and at the administrative offices if they were within 6 feet of another staff member.

Telehealth care was expanded in Behavioral Health and started in Medical and Dental care. Federal and FCC funding received allowed for needed equipment to expand this effort. Telehealth services increased by over 40,000 visits in 2021.

In connection with Catholic Community Services and the Tacoma Pierce County Health Department, Community Health Care provided testing and medical care at two temporary homeless sites. To provide care, a medical trailer was borrowed from the Health Department. Federal funding, later in the year, allowed us to purchase our own trailer.

As the pandemic situation changed so has Community Health Care's response. Now all clinics are seeing both COVID and non-COVID patients with drive thru testing available at all clinics. In partnership with the TPCHD we are testing and vaccinating anyone in the community who needs it, not just Community Health Care patients. COVID suspicious patients are sent to designated isolation areas. Behavioral health services became available only thru phone visits. The Arcora Foundation provided funds enabling dental clinics to erect isolation tents around dental chairs in order provide care safely to patients.

The pandemic has been very difficult for Community Health Care. Due a significant reduction in patient revenue and visits, 25% of the staff were placed on standby. We have received significant financial support from the federal government allowing us to bring back all our staff.

Other successes include the opening of the Foster Adoption Clinic in the Hilltop Regional Health Center, the opening of the permanent home of the School-Based Health Center at Bethel Middle School and the completion of the purchase of a medical practice in Key Center. The Key Medical Center allows us to provide care on the other side of the Narrows Bridge for the first time. Lastly, we opened a clinic in the Arlington Youth Center, which is a residential facility for homeless youth run by the Tacoma Housing Authority.

As we look to 2021, we are excited about the pandemic waning and clinics being able to resume normal operation. Also, we are planning grand opening celebrations for all the new programs we started in 2020 when the pandemic allows. Until then, get vaccinated!



David Flentge, President & CEO



Marco Viniegra, Board Chair

2020 BY THE NUMBERS

TOP ACCOMPLISHMENTS

- ★ 45,385 patients
- ★ 163,529 patient visits
- ★ 95% increase of patients since 1998
- ★ 152,515 prescriptions filled
- ★ 526 babies delivered in 2020
- ★ 7,049 patients (15.5% of patients) were served in a language other than English
- ★ 9,487 Behavioral Health patients served via both clinical and virtual visits
- ★ Performed 5,657 tests for COVID-19
- ★ Opened Foster and Adoption program
- ★ Increased Telehealth visits by 95%
- ★ Opened a clinic in the Arlington Drive Youth Campus
- ★ Completed purchase of Key Medical Center practice
- ★ Implemented mobile medical service catering to the homeless population

LOOKING AHEAD TO NEXT YEAR AND BEYOND

As we look forward to what the next years will bring, Community Health Care will continue to improve access to care to the places and people with the greatest need and fewest resources.

IMPROVING ACCESS TO CARE

- ★ **Rural Areas:** Continuing to develop clinics in the unincorporated areas of Pierce County.
- ★ **Schools:** Placing school-based health centers in all 15 school districts in Pierce County.
- ★ **Mobile Clinics:** Expanding our mobile clinic program to take healthcare services to those in need.
- ★ **Depth of Services:** Expanding beyond medical, dental, behavioral health and pharmacy so that every location also has imaging, urgent care and specialty services like oral surgery.
- ★ **Increased Patient Education & Testing:** Expanding patient education and testing on chronic disease, nutrition, cancer and behavioral health.

COMMUNITY
HEALTH
Care

IS ON THE FRONT LINE OF CARING
FOR THOSE WITH LIMITED OPTIONS.

From Key Peninsula to Spanaway, those on Medicare and Medicaid; from expectant mothers to teens needing behavioral health support; from adults in need of a dental checkup to children in the foster or adoption systems, **Community Health Care is here to help. No one is denied care due to inability to pay.**

But we can't do it without you.

COVID-19 is a once in a generation occurrence. We have been here, all along, to serve our patients but it has not been easy. Please help. From a one-time gift to a pledge to give, every little bit helps.

Go to: www.commhealth.org/give

FOSTER & ADOPTION CARE CLINIC

Community Health Care's Foster Adoption Clinic has been designated as a Foster Care Center of Excellence by Coordinated Care, the managed care provider for the Apple Health Foster Care program. The clinic received this accreditation due to its exemplary processes and medical services that provide specialized care for children in the child welfare system.

Centers of Excellence are recognized as multidisciplinary medical centers where youth in the child welfare system receive coordinated healthcare services. To qualify as a Center of Excellence, a healthcare provider must meet more than 50 criteria proving its ability to provide a higher standard of care and access to resources for children who suffer from trauma. The clinic staff also conducts annual staff training in trauma-informed care.

"The nature of foster care and adoption is that broken relationships got you to this place, so we focus on resiliency and building relationships to help give patients a healthy future," said Desiree White, ARNP and director of the Foster Adoption



Clinic. "There is this common thread of trauma that ties the foster and adoption families together, and by acknowledging that thread we can care for whole family in a unique way."

Community Health Care's roots were planted in 1969, when local doctors & community members recognized the need for Pierce county's most underserved populations to access quality, affordable, compassionate healthcare. The heart of CHC's mission recognizes that families and children touched by foster/kinship care and adoption have often been overlooked as a group that needs better access to specialized healthcare. Thus, the Foster Adoption Clinic was born in October 2020 in one of CHC's original clinic locations at the Hilltop Regional Health Center in Tacoma. To this day, CHC operates six medical and behavioral health clinics, four dental clinics, and five pharmacies throughout Pierce County, and among those clinics cared for 45,385 patients in 2020.

As a Center of Excellence, Community Health Care's Foster Adoption Clinic will be an entry point for healthcare for the entire family touched by foster



community supporting itself and coming together to make things better.”

Centers of Excellence can also refer youth to Coordinated Care for additional support. In 2016, the Washington State Health Care Authority named Coordinated Care as the sole health plan responsible for managing the healthcare of the state’s approximately 24,000 youth involved in the child welfare system including foster care, adoption support and alumni of foster care.

“Coordinated Care is pleased to recognize Community Health Care’s Foster Adoption Clinic as a Center of Excellence,” said Beth Johnson, President and CEO of Coordinated Care. “They are setting the bar high for what a trauma informed approach looks like in healthcare. We are excited to see how their innovative approaches like utilizing a family room help youth and families involved with child welfare thrive.”

care, kinship care and adoption, providing:

- Initial Health Exams within 72 hours
- Early and periodic screening, diagnosis, and treatment within 30 days of entering care
- Behavioral health services
- Dental Services
- Referrals to specialists
- Assistance with securing medical equipment
- Prescriptions, Lab tests and x-rays

By collaborating with more than 30 community partners and state-level child welfare agencies in Pierce, King and surrounding counties, the clinic has been able to reach traditionally underserved populations that have touchpoints in the child welfare system, such as homeless youth and those in group homes, unaccompanied minors, pregnant teens in foster care, and foster alumni who have “aged out” of the system.

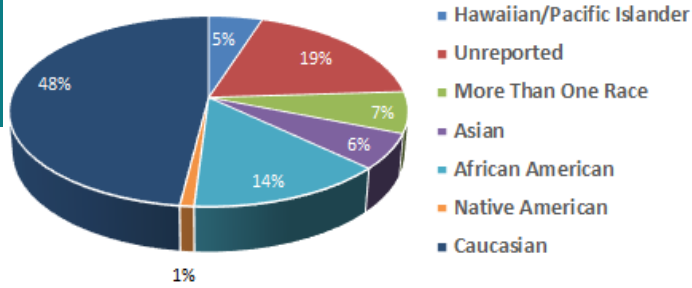
“The community is really rallying around these caregivers and forming a safety net,” said Nathan LaChine, Founder of Evergreen Caregiver Support. “This clinic is becoming a community cornerstone in that way, and the partnerships being formed reflect a holistic approach to care for the kids and families. Seeing the synergy that is starting to develop in the community around this clinic is amazing. It goes back to the grassroots of the

Community Health Care’s Foster Adoption Clinic even goes so far as to have a sensory sensitive, trauma-minimizing, and non-clinical exam space that puts patients at ease. Since January of 2021, the clinic has seen a 280% increase in visits because patients feel comfortable coming back for regular visits.

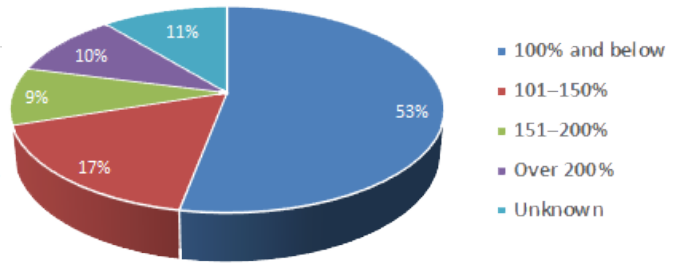


2020 PATIENT DEMOGRAPHICS

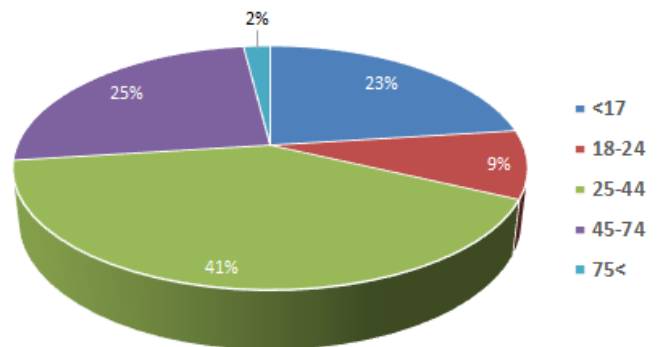
PATIENTS BY RACE



INCOME AS PERCENT OF POVERTY LEVEL

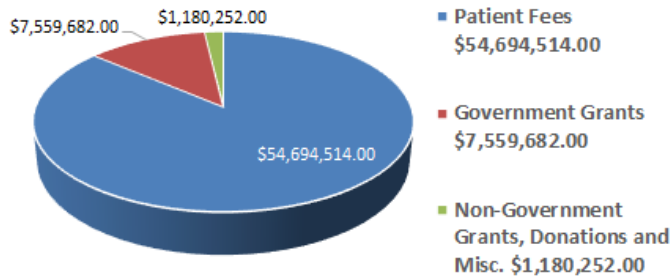


PATIENTS BY AGE

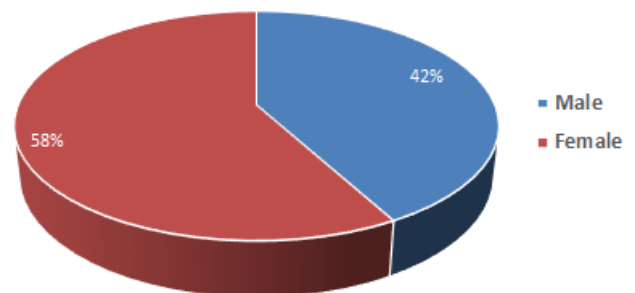


TOTAL OPERATING REVENUE BY SOURCE

Fiscal Year June 1st - May 31st 2020

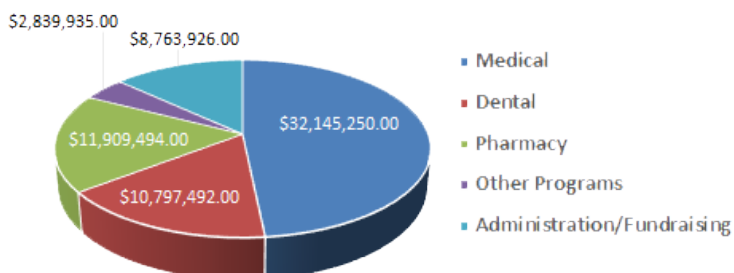


PATIENTS BY GENDER

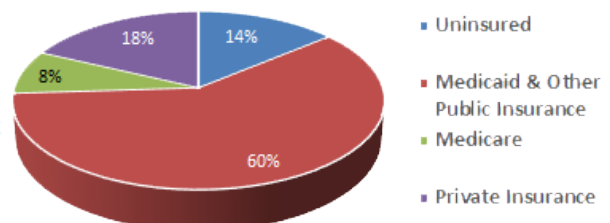


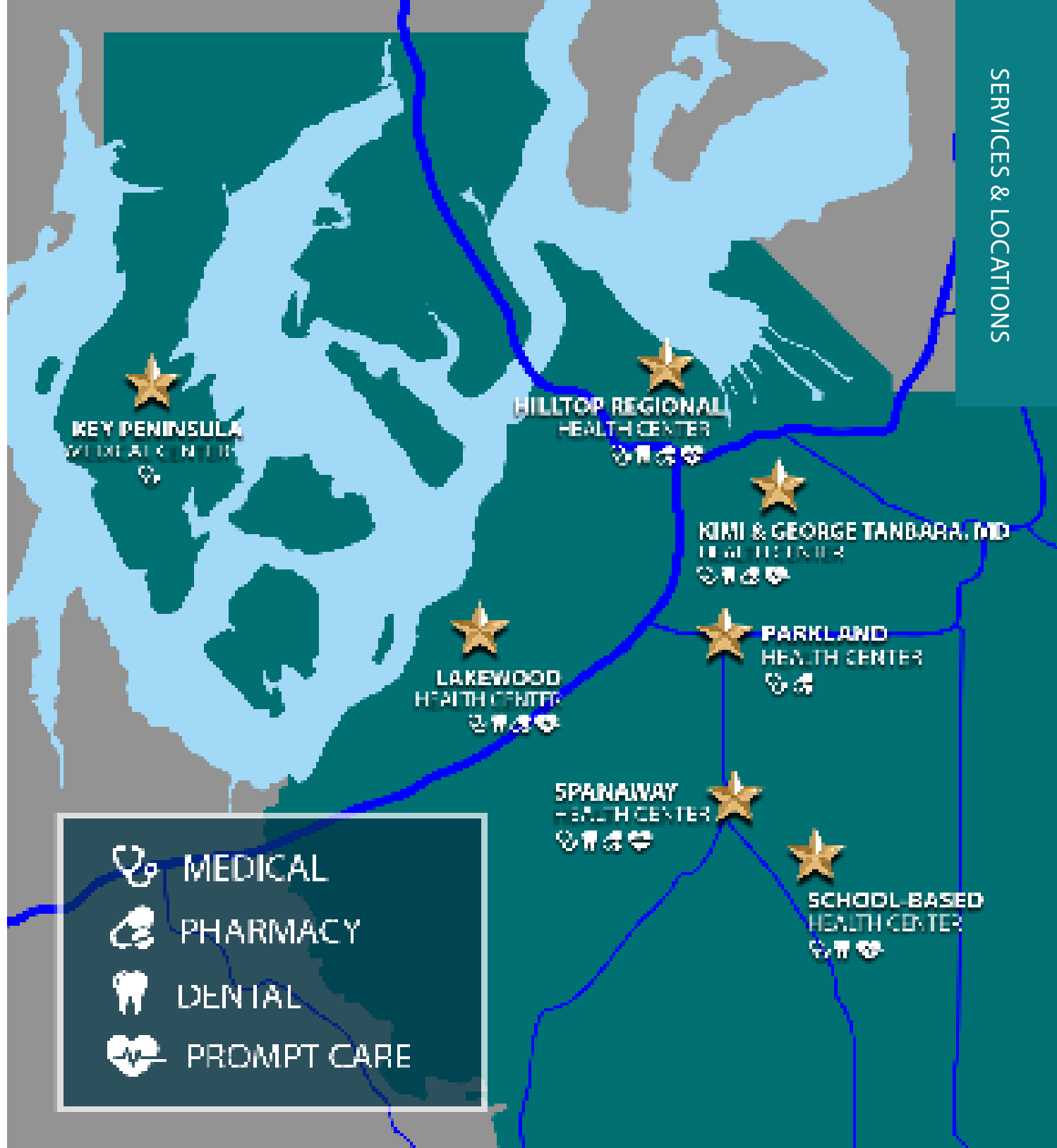
TOTAL OPERATING EXPENSES BY PROGRAM

Fiscal Year June 1st - May 31st 2020



PATIENTS BY INSURANCE COVERAGE





WHAT SERVICES DO WE OFFER?

- **Medical Care:**
Family Medical Care
Women's Healthcare
Maternity & Prenatal Care
Pediatrics
- **Pharmacy:**
Anticoagulation Clinic
Smoking Cessation
- **Dental Care:**
Family Dental Care
Access to Baby and Child Dentistry
Restorative and Preventative Care
- **Behavioral Health:**
Medicated Assisted Treatment
Counseling
Opioid Treatment
- **Outreach:**
Insurance Enrollment Assistance
Referral to Specialty Care
Referral to Community Partners for Non-Medical needs



FAMILY MEDICINE RESIDENCY

Community Health Care's family physician residency program, which launched in 2014, is affiliated with the University of Washington Family Medicine Residency Network. We are dually accredited for osteopathic (DO) and allopathic (MD) residents. The program accepts six residents each year, for a total of 18 residents for the three-year program. Inaugural class members graduated in June 2017 and all successfully passed their board exams on the first try. They accepted jobs at a variety of local, state and national organizations – including Community Health Care. The program focuses on provider retention within Tacoma and Pierce County. Our fourth class of six residents graduated from the program in June of 2020. Our family medicine residency emphasizes training family physicians in the full-spectrum care of a varied urban patient population – including outpatient, inpatient, and obstetric care. An innovative program, we are currently part of an interdisciplinary residency training program that also includes dental, nurse practitioner, and pharmacy residents.

NURSE PRACTITIONER RESIDENCY

Community Health Care's Family Advanced Registered Nurse Practitioner (ARNP) residency is one of the first of its kind in the nation. The program launched in Fall 2012 with the addition of two ARNP residents. This is a 1-year training program. This intensive program's goal is to train and retain highly effective, competent, and autonomous outpatient primary care nurse practitioners in the federally qualified health center (FQHC) setting.

DENTISTRY RESIDENCY

Community Health Care's dental residency launched in July 2013 with the addition of two residents sponsored by New York University Medical Center's (NYUMC) AEGD program. Community Health Care's dental department has affiliated with NYUMC in the establishment of a dental residency program. NYUMC's goal is to ensure access and equity in oral health care for all underserved communities. Residents will conduct approximately 1,500 patient procedures during the training year.

PHARMACY RESIDENCY

The purpose of the Post Graduate Year One (PGY1) pharmacy residency program is to uphold the mission of Community Health Care (CHC) in providing the highest level of healthcare with compassionate and accessible service to all. The program will integrate residents into the surrounding community allowing them to identify with underserved and low-income families and deliver comprehensive services to a greater number of eligible patients. *Due to COVID-19, we did not have pharmacy residents in 2020.

(left to right)

YEAR 1

- Ariahna Nietzke, DO
- Charlee Abboud, DO
- Joshua Monson, MD
- Marc Hartung, DO
- Marina Leith, DO
- Tor Anderson, DO

YEAR 1



YEAR 2

- Alireza Hadi, DO
- Cliff Moeckelmann, MD
- Charles Nguyen, DO
- Logan Brau, DO
- Sanjana Rao, MD
- Teresa Downs, MD



YEAR 2

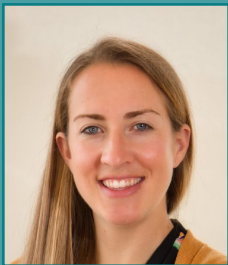
YEAR 3

- Angela Steichen, MD
- Christopher Komisarz, DO
- Logan Danielson, DO
- Michael Hemming, DO
- Travis Podbilski, DO
- Victoria Acosta, DO



NURSING

- Andrea Wittmier, DNP, ARNP, FNP-C
- Josephine Eshun, DNP, ARNP, FNP-BC



YEAR 3



ARLINGTON YOUTH CAMPUS - COMMUNITY HEALTH CARE CLINIC

According to the January 2021 Point-In-Time count by Pierce County Human Services, there are at least 92 homeless youth, young adults, and unaccompanied minors living on the streets in Pierce County. That is 10% of the total number of children in foster care. Many of these young people are fleeing abusive homes only to endure addiction, sex trafficking, lack of education, lack of emotional support, safety, and the inability to get meaningful employment. So, where do they go to find safety and help to break the cycle?

Back in the mid-2010s, Tacoma Housing Authority had a bold idea. Build a place where these young people can live in safety, receive services (such as healthcare, employment assistance, and job training), and get the encouragement they need to start building towards a healthy, productive life. After raising and receiving funds from agencies like the State of Washington, City of Tacoma, Pierce County, and private donations, they

broke ground in July of 2019 and opened in December of 2020.

Community Health Care is proud to be a part of this effort. In the 58-unit apartment building, starting in January of 2021, Community Health Care opened a small clinic, operating 2 half days per week, one day devoted to medical and the other to dental. Fully one third of the units in the main apartment building house children. The parents of these children can come to the clinic to learn about appropriate health care, from immunizations to dental care. All the residents can come to the clinic for things like dental checkups, chronic condition monitoring (such as diabetes), or just healthcare advice.

We are focused on bringing healthcare to where the need exists. Community Health Care is dedicated to changing the face of healthcare in Pierce County by acknowledging that there are many who are unable to visit the more conventional clinics and bringing services to the people who need it most.



KEY MEDICAL CENTER - COMMUNITY HEALTH CARE'S NEWEST LOCATION

Community Health Care is on a mission to provide accessible healthcare to everyone in Pierce County even in the areas far from the population centers. Our newest health center is on Key Peninsula. Key Medical Center is now flying the Community Health Care banner.



Key Medical Center has been keeping Key Peninsula citizens healthy since 1993. The founder of Key Medical Center and current medical provider, Dr. William Roes, agreed to continue in his position after the purchase, providing much needed continuity and patient satisfaction. The practice currently supports 3,500 patients but plans to add patients with the hiring of a new pediatrician, Dr. Mimi Chau, and a behavioral health consultant, Martha Sandquist.

We are partnering with several other nonprofit entities in the area, like the Mustard Seed Project and Food Backpacks for Kids. The Mustard Seed Project plans to open an assisted living campus in 2022, right

up the street from Key Medical Center. Our two entities are working on a plan where Community Health Care will aid in the care of those residents. In 2018, almost 20% of Key Peninsula residents relied on either Medicare or Medicaid for their insurance, both of which are accepted by Community Health Care. Just shy of 8% of KP residents are uninsured. We are uniquely positioned to help uninsured residents

navigate the insurance process to help get the coverage they need. And as always, Community Health Care never turns anyone away for inability to pay.

As the pandemic wanes, look for us at community events like Key Peninsula Logging Show & Festival, prepared to answer questions and give out popular items like toothbrushes and hand sanitizer. We are working with the Peninsula School District to set up a summer health fair, where we can provide sports physicals and dental checks.

There are also plans in the works for a grand opening celebration. As an organization, we are very excited about being a part of the Key Peninsula community.



COMMUNITY HEALTH CARE PIVOTS WITH THE ONSET OF CORONAVIRUS

So much has happened since this time last year, but the one over-arching event is the advent of the coronavirus. In the beginning, no one went anywhere. We (the medical community) did not know how contagious it is; we did not know how to control it; we were not sure how best to treat it. With time comes experience and we have learned so much since then. We mask up, we social distance, we wash our hands.



In order to continue to provide our patients with quality healthcare, we made a lot of changes. One of those changes includes an increase in the use of personal protective equipment (PPE). On the dental side, we employed plexiglass and plastic barriers, air filtration and circulation to cut down on the spread of respiratory droplets. One of the major changes made in both the medical and behavioral health areas is the increased use of telehealth.

What is telehealth? Telehealth — sometimes called telemedicine — is the use of electronic information and telecommunication technologies to provide care when you and the doctor aren't in the same place at the same time. If you have a phone or a device with internet access, you already have everything you need



to get medical care or services through telehealth. Telehealth isn't a perfect fit for everyone or every medical condition. Make sure you discuss any disadvantages or risks with your primary care provider.

In addition to doubling down on PPE and ramping up telehealth, we were on the front lines with both COVID testing, and once the vaccines came out, immunizing our patients. We performed COVID tests at four of our clinics: Hilltop, Eastside, Spanaway, and Lakewood. We moved our Urgent Care Clinic up to the 2nd floor of Hilltop and made the space on the first floor into a strictly COVID treatment space. We worked in tandem with the Tacoma-Pierce County Health Department and vaccinated patients at Hilltop, Lakewood, local high schools, and our School-Based Clinic at Bethel Middle School. Our goal is to provide vaccines to the most underserved populations in our community.



Community Health Care is dedicated to providing our patients with the safest and best possible healthcare, no matter what is going on in the world. From every day life to managing a pandemic, we have been here for our patients for more than 50 years and will be here - with your help - for the next fifty.

THE ENDOWMENT FUND



The Kimi & George Tanbara, MD Endowment Fund for Patient Care was created by acclamation in 2018 and is currently accepting gifts from patients, friends, and a grateful community.

This Permanent Endowment at Community Health Care was kicked off with a matching gift of \$100,000 by a local family in October of 2018. Any donation to the Permanent Endowment will be matched dollar for dollar until the total of new donations equal \$100,000.

The income from the Endowment is used to give a medical hand-up to patients with the least ability to pay for primary health care.

THANKS TO THE ENDOWMENT DONORS

KEYSTONE \$100,000 - \$399,000

Anonymous

AMBASSADOR \$10,000 - \$24,999

David & Linda Flentge

FOUNDER \$5,000 - \$9,999

Anonymous

UNDERWRITER \$2,500 - \$4,999

William* & Andrea Gernon
Corey & Jeri Hatfield
Gary & Shirley Kawasaki
Paul & Linda Ried
James Walton

BENEFACTOR \$1000 - \$2,499

Callie & Robbin Gard
David Hunter
Ann Kawasaki-Romero & Rocco Romero
Gayle Matthews & Irene Grias
Rick & Maggie Oldenburg
Gary Reichard
Claude Remy & Claire Spain-Remy
Greg & Dion Rurik
Peter & Andrea Shelley
Paul Sherman
Lynn & Kathy Sommers
Kirk & Janie Starr

PATRON \$500 - \$999

The Bamford Foundation
Liz* & Ronald Goldberg
Lisa Hoglan
Brienne & Brian Kampbell
Lori Matsukawa
Richard Ory
Pediatrics Northwest
Roger Simms
Chris Templeton & Brenna Brandsma
William & Frances Thomas

Kitty-Ann Van Doorninck & John Van Buskirk
William & Natalie Whitcomb
Mitch & Mary Woodruff

PARTNERS \$250 - \$499

Aarika Anderson Elter
Barry & Sharon Benson
Leanne Berge
Gary Brackett
Lorraine Bradley
Brynn Brady
Robin & Ed Echtle
Tal Edman
Cynthia Edwards
Stephen & Anne Enquist
Ladedria Griffin-Stallworth & Robert Stallworth
Don & Jean Hansen
Kurt & Cheryl Jacobson
Harbir Juj
Sara Kendall
Harrison Laird
Amy Lewis
Kathy McGoldrick
Mostafa Norooz
Russ & Cindy Sondker
Betty & Vernon Young

SUSTAINERS \$100 - \$249

Susan Adams-Provost
Sharon & John Alger
Donald & Nancy Anderson
Brad Baker
Lois Bernstein & Will Vargish
Catherine Bordeaux
Richard & Nelwyn Brady
Mike Brandstetter
Gregory Briggs
Steve & Shawn Brown
David Bugher
Tara Cardinal
John Caulfield

Darcy Celletti
Connie Clark
Doug Gahlgren & Milana McLead
Dorothy Dedrick
Sandra Eliason
Robert Ettlinger
Kathleen Figetakis
Victoria Gernon
Martin Goldsmith
Karen Goon & Stephen Shelton
Eugene Hammermaster
Lori Harnick
Richard & Sonya Hawkins
Carrie Holden
Karen Holdner
Steven Jarvis
Nancy Jones
Shannon Kelley-Fong
Peter Kram
Daniel Krebs & Sandra Spadoni
Joshua Krebsbach
Imka Lavinder
Gretchen Leanderson
Joyce Loveday
Juel Lugo & Clay Krauss
Clancy & Shellye Maluo
Sandy Mazzei
Pat McCarthy
Molly Mc McHugh
Janice Oldenburg & Steve Wells
Kurt & Rickie Olson
Loyd Percy
John & Mary Peterson
Julia Peterson
Jane & Dan Pryor
Lydia Reeves
Anderson Richardson
Glenn Rollins
Jeff Rounce
Liesl Santkuy
Paul & Catherine Schneider
Kristin Sergienko

Marion Sharp & Noel Blyler
Robert & Madelyn Smith
Andrea Smith
Merilee Tanbara
Gary Tart & Mary Gilston
Marco Viniegra & Richard Houle
Colleen Waterhouse
Ellie Wilson

FRIENDS \$1 - \$99

Bruce & Wendy Alexander
Anonymous
Anonymous
Linda Bowman
Jenna Burrell
Al Cosio
Mary Dodsworth
Jennifer & Julian Edgoose
Thomas Felnagle
Rosa & James Franklin
Cindan Gizzi
John Graham
Barbara & Michael Hesner
Rosa Johnson
Carol Kowalski
Tho Kraus
Yuni Medlin
Sheila Miraflor
Mary Moss
Brendan Nelson
Jamie Norem
Dareth Pak
Aaron & Leona Pointer
Keri Rawlings-Rooney
Pamm Silver
Kelli Stone
Sami Thach
Thomas & Roberta Valentine
Lauren Walker-Lee & Sidney Lee
Robert & Michie Yamashita

*deceased

FRIENDS OF COMMUNITY HEALTH CARE

THANK YOU FOR YOUR SUPPORT OF THE PATIENT CARE FUND!

CORPORATE SPONSORS

FOUNDERS \$5000+

Amerigroup
Arcora Foundation
The Bamford Foundation
Empire Managed Solutions
Bruce W. Gilpin Memorial Foundation
Oscar T. and Olivann Hokold Foundation
Kaiser Permanente
KeyBank Foundation
Gary E. Milgard Family Foundation
OnePierce
Rotary Club of Tacoma #8
Scott E. Silver Family Foundation
United Healthcare Community Plan

BENEFACTORS \$1000-\$4999

AmerisourceBergen Services Corporation
Asia Pacific Cultural Center
Brown & Brown of Washington
CHI Franciscan Health System
Community Health Plan of Washington
Coordinated Care
Fluke Corporation
Host Hospitality
Labcorp
Minuteman Press - Downtown Tacoma
Molina Healthcare of WA
MultiCare Health System
L.T. Murray Family Foundation
Pediatrics Northwest
Pierce County Dental Foundation
Tacoma Community College Foundation
US Bank
Wilson Albers

PATRONS \$500-\$999

Clover Park Technical College
Commencement Bank
Hilltop Action Coalition
Pierce County Medical Society Foundation
REACH Ministries
St. Vincent de Paul
Tacoma Community House
Tacoma-Pierce County Health Department

SUSTAINERS \$100-\$249

Fred Meyer Community Rewards
Greater Tacoma Community Foundation
Juanita Asalia Lanier Agency
On the Road with PartnerCafe
Shilo Baptist Church
Sun Liquor Distillery
United Way of Pierce County

FRIENDS \$1-\$99

Amazon Smile Foundation
Greater Tacoma Peace Prize

INDIVIDUAL SPONSORS

FOUNDERS \$5000+

Rebecca Bianco & Bill Duke
Anonymous
Corinne Dixon
David & Linda Flentge
Elizabeth Lufkin
Lynn & Kathy Sommers
Michael Tucci

BENEFACTORS \$1000-\$4999

Ronald & Queta Bauer
Elizabeth DeLong
John & Buzz Folsom
William* & Andrea Gernon
Kurt & Cheryl Jacobson
Paul Jakeman
Deborah Lain
Bob & Janet Lordahl
Gayle Matthews & Irene Grias
James & Mary Morgan
Justin & Del Morrill
Toby & Laurie Murray
Anthony Paulson & Joan Benderson
John & Mary Rowlands
Janet Runbeck & Michael Mowat
Jeff & Carolyn Smith
Kirk & Janie Starr
Dorothy Swanberg
Diane & Harold Taniguchi
Anonymous
Mike & Mimi Tucci
Theodore & Janet Werner
Tom West
Lawrence & Donna White
James & Sally Will

PATRONS \$500-\$999

Godwin & Angela Asemota
Albert & Linda Bird
Tonia & Larry Campbell
Marcia Cramer
Kathleen Deakins
Collin Foulds
Callie & Robbin Gard
Grant & Laura Gardner
Brian Gearheard
Barry & Juanita Goldman
Mark & Nancy Grubb
Jordan & Judy Harris
Sarah & Juan Iregui
Ralph Klose
Clara Ladd
Carrie Lillie-Lugo & Andres Lugo
Tim Mansfield
Betsy Monahan

Janice Oldenburg & Steve Wells
John & Mary Peterson
Rich Petrich
Claude Remy & Claire Spain-Remy
Jeff & Donna Reynolds
Daniel & Patricia Sloan
Mary & James Smith
Russ & Cindy Sondker
Willie & Faye Stewart
William & Natalie Whitcomb

PARTNERS \$250-\$499

Diane Akana
Bruce & Wendy Alexander
Anonymous
Joanne & Cal Bamford
Lorraine Bradley
Marsha & Andrew Burns
Robert & Sharon Camner
Patrick & Patricia Coogan
Sharon Ebelt
Greg Fisher
Steve & Cynthia Hammer
MaryAnn & David Harshman
Corey & Jeri Hatfield
James & Pokey Kinoshita
Katherine & John Landy
Priscilla Lisicich & David Haapala
Juel Lugo & Clay Krauss
Ralph Martin
Tanya McClain
Jerry McLaughlin
Jack & Myrna Nagle
Rick & Maggie Oldenburg
Arthur & Aija Ozolin
Andre Penalver
Susan & Ken Powell
Debbie & Leo Regala
William & Jan Rogers
Kathryn Serrano
Harold & Sandra Shellabarger
Greg & Barbara Tanbara
Carole Tingstad
Nancy Vignec
James Walton
Jack Warnick
Edward Wolfer

SUSTAINERS \$100-\$249

Susan Ableidinger
John & Sharon Alger
Tami Baker
John & Sally Barline
Allan & Melinda Belton
Leanne Berge
Lois Bernstein & Will Vargish
Maggie Blair
Catherine Bordeaux
William & Jean Bradbrooke

FRIENDS OF COMMUNITY HEALTH CARE

THANK YOU FOR YOUR SUPPORT OF THE PATIENT CARE FUND!

Richard & Nelwyn Brady
 Shirley Carstens
 Abie Castillo
 Yun Cha
 Todd and Liz Chambers
 Scott & Mary Chapman
 Ronald & Linda Coleman
 Richard & Robin Corak
 Kevin Corcoran
 Beverly & J.S. Corrington
 Jo Davies
 Marc & Jeanette DeBenedictis
 Lila Early
 Jennifer & Julian Edgoose
 Tal Edman
 Carolyn Else
 Robert Ettlinger
 Linda & Gerry Evanson
 Thomas Felnagle & Debby Mumm-Felnagle
 Jackie Flowers
 Armando & Cheryl Garcia
 Ken & Sylvia Gentili
 Michelle George
 Martin Goldsmith & Jodie Zaricor
 Cathy & Andy Hall
 Wendy Hamai & Henry Stoll
 Mary Hanneman
 Don & Jean Hansen
 Thomas Hong
 Kiyooki Hori & Patricia Palms
 Jurgen & Susan Huck
 Deb & Donn Irwin
 Michael Jarvis
 Nancy Jones
 David & Karen Judish
 Troy Ann Kerley
 Ronald & Margo Klein
 Julie & Albert Klingbeil
 Margie & Steve Kober
 Daniel Krebs & Sandra Spadoni
 Joshua Krebsbach
 Teri & Jim Kuhlman
 Susan Kunkel
 Harrison Laird
 Steve & Lois Larson
 David & Beverly Law
 Mario & Frances Lorenz
 Bev Losey
 Patricia Mail
 Clancy & Shelly Maluo
 Jason Mancil
 Pamela Mayer
 Michael & Mary McDougal
 Kathy McGoldrick
 Yuni Medlin
 Jane & Hugh Moore
 Michelle Morlan
 Greg & Mei Mowat

Allison Odenthal
 Robert Ory
 Richard Ory
 Jean Picha-Parker
 Aaron & Leona Pointer
 Kristina Powers
 Jane & Dan Pryor
 Charles & Mary Rance
 Al & Marilyn Ratcliffe
 Gail Alexis Ray
 Dirk & Cara Reese
 Lydia Reeves
 Bill & Ann Riley
 Georgine Roller
 Carolyn Saastad
 Debbie Saint
 Liesl Santkuyl
 Elaine Saucier
 Jennifer Schaal
 Paul & Catherine Schneider
 Karen Seinfeld
 Andrea Smith
 Mark & Lynne Stephan
 Merilee Tanbara
 Sara Thompson
 Mary Torrey
 Marco Viniegra & Richard Houle
 Christine Walker
 Ellen Walkowiak
 Merle Walter
 Colleen Waterhouse
 Desiree White
 Joseph Williams
 Eleanor Wilson
 Robert & Michie Yamashita

FRIENDS \$1-\$99

Jeff Axtell
 Robert & Helen Batie
 Cliff Birdsall
 Virginia Buccola
 Jenna Burrell
 Connie Clark
 Levin Conway
 Mary Dodsworth
 Patricia Farnand
 Kathleen Figetakis
 Yury Gagarin
 Michael & Judith Gage
 Katie Gulliford
 Ma'ata Hardman
 Barbara & Michael Hesner
 Nancy Hogan
 Alan & Debbie Jacobson
 Susan Keith
 Peter Kram
 Mardi Landry
 Sally Linn
 James Luzzi

Bruce Macdonald
 Suzanne Mager
 Lori Matsukawa
 Sharon & Doug Mattson
 Sandy Mazzei
 Mary McHugh
 Joey Mertlich
 Carmela Micheli
 Shannon & Derik Mortimer
 Dan & Robbin Nelson
 Phyllis Nelson
 Julia Niel
 George & Mildred Nishimura
 Susan Parker
 Gayle Pierce
 David Rafferty
 Kenneth Repp
 Catherine Robins
 Jeff & Jill Rounce
 Marv Sandberg
 Ardys Scott
 Sukhjiwan Singh
 Jacki Skaught
 Reberta Skinner
 Jen Srinouanprachanh
 Dan Stoehr
 Donna Strandt
 Taylor Trujillo
 Nancy Walker
 Mary & Harold Walter
 Robert & Geraldine Ward
 Roger & Debra Young

*Deceased

SBHC UPDATE

We are getting noticed! The Community Health Care School-Based Health Center (SBHC) located at Bethel Middle School received an important visitor: US Representative Kim Schrier. Congresswoman Schrier represents Washington's 8th Congressional District, which includes much of King, Pierce, Kittitas, and Chelan Counties, and portions of Douglas County. She was welcomed by our CEO, David Flentge, Audria Cordova-Kennedy and Brandon Faraday - clinic administrators, Dr. Jeff Reynolds - our Dental Director, as well as several notables from the Bethel School District. A pediatrician herself, we were glad to welcome the Congresswoman, to answer her questions and talk about our mission: To bring quality, accessible healthcare to everyone!



DON'T FORGET NEXT YEAR'S LUNCH & LAUGHTER EVENT:
WWW.COMMHEALTH.ORG/LUNCH

COMMUNITY
HEALTH
Care

CONTACT US

- ★ www.commhealth.org
- ★ development@commhealth.org
- ★ Make a Donation:
www.commhealth.org/give